



Model HWH 2K, 3t



Model HWH KS, 5t

## Hydraulic car jack

- with 2 pistons  
model HWH 2K PROLINE

- with 2 pistons and spindle  
model HWH 2KS PROLINE

- with piston and spindle  
model HWH KS PROLINE

### Capacity 2 - 30t

For lifting vehicles on one side (the lifted load must be secured mechanically with supporting stands, for example).

#### Features

- Versions with hydraulic piston and mechanical spindle drive resp. with 2 hydraulic pistons.
- With carrying bracket from load capacity 20t.
- Extremely low design with model HWH 2K/D (incl. 1 pressure section for lift extension).
- With integrated pressure control valve for a longer service life of the jack.
- Integrated seat valve for controlled lowering of the load.



Model HWH 2K NB, 10t



Model HWH 2KS, 10t

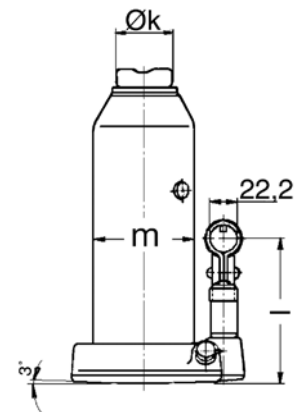


Model HWH KS, 20t

Technical data model HWH 2K PROLINE and HWH 2KS PROLINE

Model	EAN-No. 4050939***	Capacity t	Weight kg
HWH 2K 3,0	***017507	3	4.87
HWH 2K 5,0	***017569	5	6.3
HWH 2KS 10,0	***017781	10	8.8
HWH 2KS 12,0	***017859	12	11.0
HWH 2K NB 10,0 <sup>1</sup>	***017828	10	7.9
HWH 2K/D 10,0 <sup>2</sup>	***017798	10	6.5

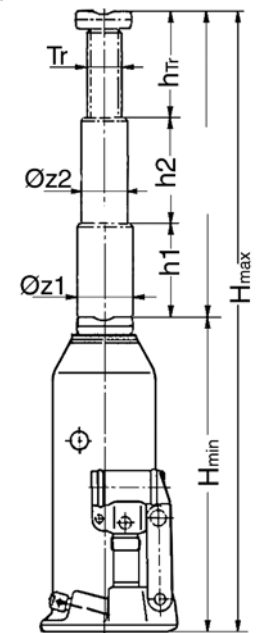
<sup>1</sup> horizontal pump unit    <sup>2</sup> with replaceable pressure section (height 45 mm)



Dimensions model HWH 2K PROLINE and HWH 2KS PROLINE

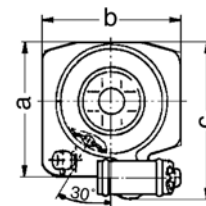
Model	HWH 2K 3,0	HWH 2K 5,0	HWH 2KS 10,0	HWH 2KS 12,0	HWH 2K NB 10,0 <sup>1</sup>	HWH 2K/D 10,0 <sup>2</sup>
H min., mm	185	215	200	230	175	120
H max., mm	400	520	530	570	385	230
h1, mm	110	145	130	130	104	54
h2, mm	105	160	132	125	106	56
hTr, mm	-	-	68	85	-	-
Ø k, mm	60x35	43	40	48	43	38
l, mm	115	134	116	53	136	112
m, mm	80	90	116	133	116	116
Tr, mm	-	-	32x5	40x6	-	-
Ø z1, mm	32	39	52.58	61.5	52.5	52.5
Ø z2, mm	23	29	39.5	48.5	39.5	39.5

<sup>1</sup> horizontal pump unit    <sup>2</sup> with replaceable pressure section (height 45 mm)



Technical data model HWH KS PROLINE with piston and spindle

Model	EAN-No. 4050939***	Capacity t	Weight kg
HWH KS 2,0	***018436	2	2.9
HWH KS 3,5	***018535	3.5	2.9
HWH KS 5,0	***017286	5	3.9
HWH KS 8,0	***017293	8	5.7
HWH KS 10,0	***017316	10	5.7
HWH KS 12,0	***017323	12	7.1
HWH KS 15,0	***017354	15	8.3
HWH KS 20,0	***017521	20	10.7
HWH KS 25,0	***017743	25	13.1
HWH KS 30,0	***017774	30	14.5



INFO

Model HWH KS PROLINE with capacity of 50t and 100t available on request.

Dimensions model HWH KS PROLINE with piston and spindle

Model	HWH KS 2,0	HWH KS 3,5	HWH KS 5,0	HWH KS 8,0	HWH KS 10,0	HWH KS 12,0	HWH KS 15,0	HWH KS 20,0	HWH KS 25,0	HWH KS 30,0
H min., mm	170	170	212	220	220	230	230	240	240	240
H max., mm	377	377	462	480	480	497	495	505	515	482
h1, mm	115	115	150	150	150	157	155	155	157	142
hTr, mm	92	92	100	110	110	110	110	110	118	100
Ø k, mm	28	28	40	48	48	48	60	60	65	65
l, mm	113	113	113	116	116	116	116	116	120	116
m, mm	58	58	65	80	80	90	95	116	133	133
Tr, mm	20x4	20x4	24x5	32x5	32x5	35x6	40x6	45x6	48x6.35	48x6.35
Ø z1, mm	24.9	24.9	29.9	39.5	39.5	43.5	48.5	54.5	59.5	61.5



## Universal jacks model JH

### Capacity 2 - 50t

Universal jacks supply high forces for general operations like lifting, pushing, moving, supporting of all kind of loads.

### Features

- Robust, long life design.
- Pressure relief valve
- Precise controlled lowering.
- Additional screw extension of the piston (up to 20t).
- Grooved saddle.
- Large base plates for increased stability.
- Model JH-50-2 with two-stage pump.
- Incl. operating lever.



JH-50-2

### Technical data model JH

Model	EAN-No. 4025092*	Capacity t	Lift mm	Additional screw extension mm	Closed height mm	Base plate mm	Pump	Weight kg
JH-2 B	*162722	2	115	50	181	90x95	1 <sup>st</sup> stage	2.7
JH-4 B	*162739	4	126	60	205	115x110	1 <sup>st</sup> stage	3.7
JH-6 B	*162746	6	130	75	219	115x110	1 <sup>st</sup> stage	4.7
JH-8 B	*162753	8	152	70	225	120x120	1 <sup>st</sup> stage	5.7
JH-12 B	*162760	12	153	80	240	140x130	1 <sup>st</sup> stage	8.0
JH-20 B	*162777	20	153	80	240	160x155	1 <sup>st</sup> stage	11.0
JH-30	*154352	30	180	-	280	210x180	1 <sup>st</sup> stage	22.0
JH-50-2	*154376	50	178	-	305	255x190	2 <sup>nd</sup> stage	53.0

## Machine jack model MH

Capacity 5 - 25 t

For lifting heavy machinery and other loads.

### Features

- Can be used in every position.
- Lifting by means of a hand pump.
- Lowering by means of a precision lowering valve.
- With carrying handle for models MH 50 and MH 100.
- With carriage for model MH 250.
- Pressure control valve for a longer service life of the jack.
- Integrated lifting limitation.
- Low application height of the claw.
- Slewing claw (models MH 50 and MH 100)
- Large base plate for a high level of stability.
- Stable construction with hard-chromium plated piston rod.



### Technical data model MH

Model	EAN-No. 4025092* 4050939***	Capacity t	Lift mm	Application height min. with claw mm	Application height min. with head mm	Pump lever force with full load daN	Weight kg
MH 50	*983815	5	205	25	≤ 368	38	25
MH 100	*983730	10	230	30	≤ 420	40	35
MH 250	***005269	25	215	58	≤ 505	40	109

### Dimensions model MH

Model	MH 50	MH 100	MH 250
A, mm	393	449	-
B, mm	320	325	459
C, mm	213	205	420
D, mm	115	120	220
E, mm	53	55	90
G, mm	25	30	58
H, mm	368	420	505
H1, mm	573	650	720
H2, mm	205	230	215
J, mm	77	74,5	142,5
K, mm	93	108	175
L, mm	520	520	920/840
M, mm	740	745	1305/1225
N, mm	140	170	210/283
Ø Z, mm	76	91	155

